

## CASEWORK PROFILES



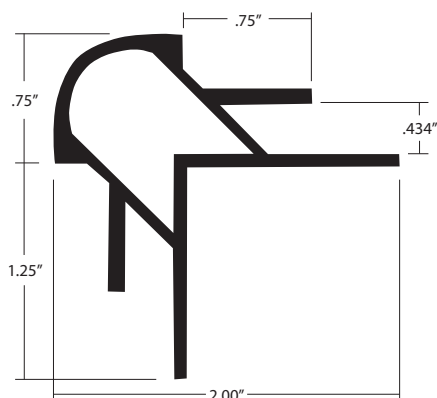
[View All Trims](#)



### COR-5163 RADIUSED OUTSIDE CORNER, HEAVY DUTY

Eagle Aluminum's casework trims are perfect for giving your commercial casework a finished look. Aluminum casework trims are designed to fit seamlessly into wood fixtures for protection against wear and tear. When it comes to finishing casework, aluminum trims are an excellent choice. Not only are they stronger than their plastic equivalents, but they also add a sleek and modern touch to any room. All of our aluminum casework trims are corrosion resistant, lightweight, and cost-effective making them the ideal building components for large and small projects.

- Stocked in 12' lengths (120 inches)
- Stocked in Clear Satin Anodized (EA)
- Composition: 6065-T5 Extruded Aluminum



**Item Number**  
COR-5163

**Depth**  
0.75" ( $\frac{3}{4}$ ")

### FINISH OPTIONS

Eagle Architectural Casework Trims are available in Clear Satin anodized, Mill Finish, color anodized and powder coat finishes.

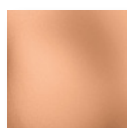
### ANODIZED FINISHES



**Clear Satin**  
AB1010



**Champagne**  
AA1020



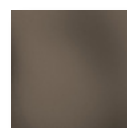
**Rose Gold**  
AA1090



**Golden Bronze**  
AA1030



**Light Bronze**  
AA1040



**Medium Bronze**  
AA1050



**Dark Bronze**  
AA1060

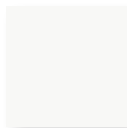


**Deep Bronze**  
AA1070

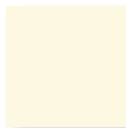


**Black**  
AA1080

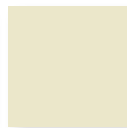
### POWDER COAT FINISHES



**White**  
PM5210



**Cream**  
PM5220



**Almond**  
PM5230



**Khaki**  
PM5240



**Silver Gray**  
PM5250



**Light Gray**  
PM5260



**Dark Gray**  
PM5270



**Medium Bronze**  
PM5050



**Dark Bronze**  
PM5060



**Black**  
PM5080

### FIELD PAINTING INSTRUCTIONS

Clean and prep mill finish (MF) trim in accordance with the paint manufacturer's best practices. Ensure paint and primer is recommended for aluminum via paint manufacturer. Apply coating until desired finish is achieved.

**Painting Clear Anodized:** This is generally not recommended, but can be achieved when necessary. Clean and treat aluminum with an acid etch solution. Rinse thoroughly and dry. Apply an acid-etched prime/primer based on the paint manufacturer's best practices. Apply paint coating per paint manufacturer's specifications.

### CUTTING INSTRUCTIONS

When necessary, cut material using a miter saw with a high-quality, non-ferrous carbide blade with a minimum tooth count of 80, and lubricant. Clean trim prior to installation. Refer to saw blade manufacturer's best practices for additional information.

### WARRANTY

Eagle Aluminum's warranty covers manufacturing defects for a period of three years. Refer to Eagle Aluminum's warranty documentation for additional details.