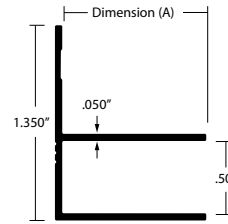


## MILLWORK PROFILES



View All Trims



### EMT-06 "F" 1/2" REVEAL

If you're looking for a way to add a touch of sophistication to your project, our straight and consistent reveals are the perfect solution for horizontal and vertical applications. They're easy to install and maintain, and they will give your space a finished, professional look that will last for years to come.

- Stocked in 10' lengths (120 inches)
- Stocked in Clear Satin Anodized (EA) and Mill Finish (MF)
- Composition: 6063-T5 Extruded Aluminum

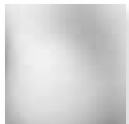
### PROFILE DEPTHS

Item Number	Dimension (A)
EMT-06075	0.75" ( 3/4" )
EMT-06100	1.00" ( 1" )

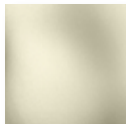
### FINISH OPTIONS

Eagle Architectural Trims are available in Clear Satin anodized, Mill Finish, color anodized and powder coat finishes.

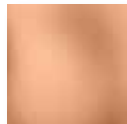
## ANODIZED FINISHES



Clear Satin  
AB1010



Champagne  
AA1020



Rose Gold  
AA1090



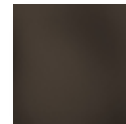
Golden Bronze  
AA1030



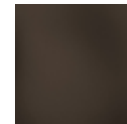
Light Bronze  
AA1040



Medium Bronze  
AA1050



Dark Bronze  
AA1060

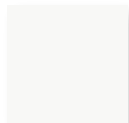


Deep Bronze  
AA1070

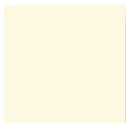


Black  
AA1080

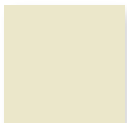
## POWDER COAT FINISHES



White  
PJ2210



Cream  
PJ2220



Almond  
PJ2230



Khaki  
PJ2240



Silver Gray  
PJ2250



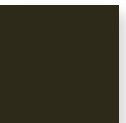
Light Gray  
PJ2260



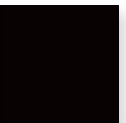
Dark Gray  
PJ2270



Medium Bronze  
PJ2050



Dark Bronze  
PJ2060



Black  
PJ2080

### FIELD PAINTING INSTRUCTIONS

Clean and prep mill finish (MF) trim in accordance with the paint manufacturer's best practices. Ensure paint and primer is recommended for aluminum via paint manufacturer. Apply coating until desired finish is achieved.

*Painting Clear Anodized:* This is generally not recommended, but can be achieved when necessary. Clean and treat aluminum with an acid etch solution. Rinse thoroughly and dry. Apply an acid-etched prime/primer based on the paint manufacturer's best practices. Apply paint coating per paint manufacturer's specifications.

### CUTTING INSTRUCTIONS

When necessary, cut material using a miter saw with a high-quality, non-ferrous carbide blade with a minimum tooth count of 80, and lubricant. Clean trim prior to installation. Refer to saw blade manufacturer's best practices for additional information.

### WARRANTY

Eagle Aluminum's warranty covers manufacturing defects for a period of three years. Refer to Eagle Aluminum's warranty documentation for additional details.