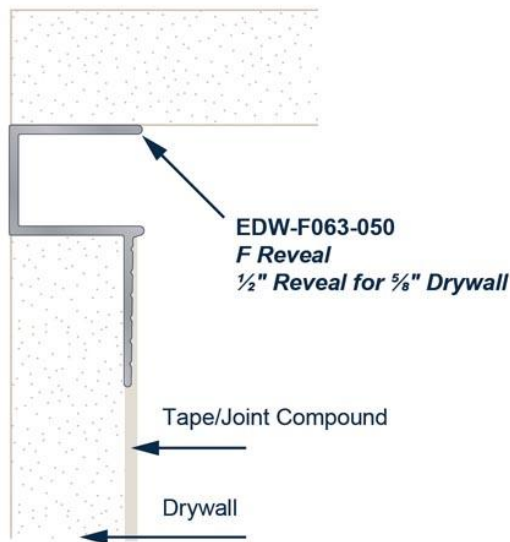




## Drywall Installation Instructions

1. Drywall & Wall Covering trims are generally put in place after the drywall has been installed.
2. Place the trim such that there are no gaps and it fits neatly with the drywall and allows for a seamless transition when mudding & taping.
3. Secure the trim by using #6 drywall screws, or other approved fasteners, through the flanges into the framing that backs the drywall. It is recommended that screws are 16" on center.
4. Prior to mudding and taping, the flanges should be cleaned to ensure a consistent finish.
5. Tape should be applied to span from the drywall to the trim or reveal without covering the exposed feature of the drywall trim (e.g., the reveal).
6. Joint compound should then be applied in coats until the desired surface finish is achieved.

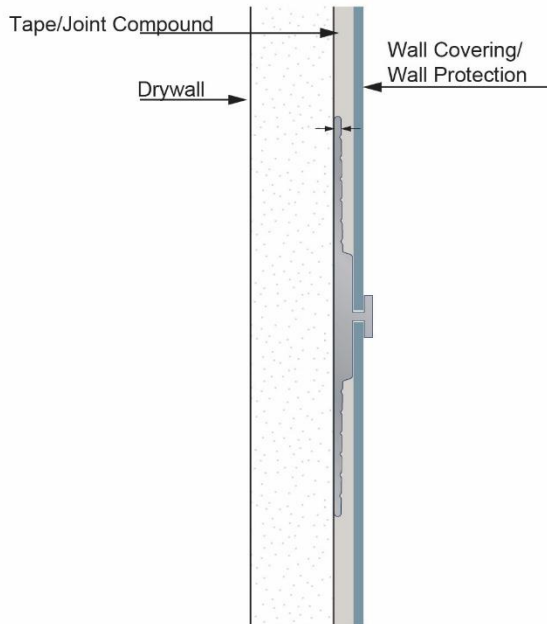


## Wall Covering Installation Instructions

1. For wall covering trims, the same process described above should be used to mud/tape in the trim.
2. Once the trim is mudded and taped, it is time to install the wall covering per the manufacturer's instructions (generally applying an adhesive progressively and adhering the wall covering).
3. If the wall covering trim has exposed metal beyond where it is mudded/taped, there are two options:



- a. Apply a thin coat of joint compound on the exposed metal and then use the standard wall covering adhesive to install all the way to the edge of the trim
- b. Use a metal specific adhesive as recommended by the wall covering manufacturer on the exposed metal surface and install the wall covering all the way to the edge of the trim



## Cutting Instructions

When necessary, cut material using a miter saw with a high-quality non-ferrous carbide blade with a minimum tooth count of 80 and lubricant. Clean trim prior to installation. Refer to saw blade manufacturer's best practices for additional information.

## Field Painting Instructions

Clean and prep mill finish (MF) trim in accordance with the paint manufacturer's best practices. Ensure paint and primer is recommended for aluminum via paint manufacturer. Apply coating until desired finish is achieved.

*Painting Clear Anodized* – This is generally not recommended, but can be achieved when necessary. Clean and treat aluminum with an acid etch solution. Rinse thoroughly and dry. Apply an acid-etched prime/primer based on the paint manufacturer's best practices. Apply paint coating per paint manufacturer's specifications.