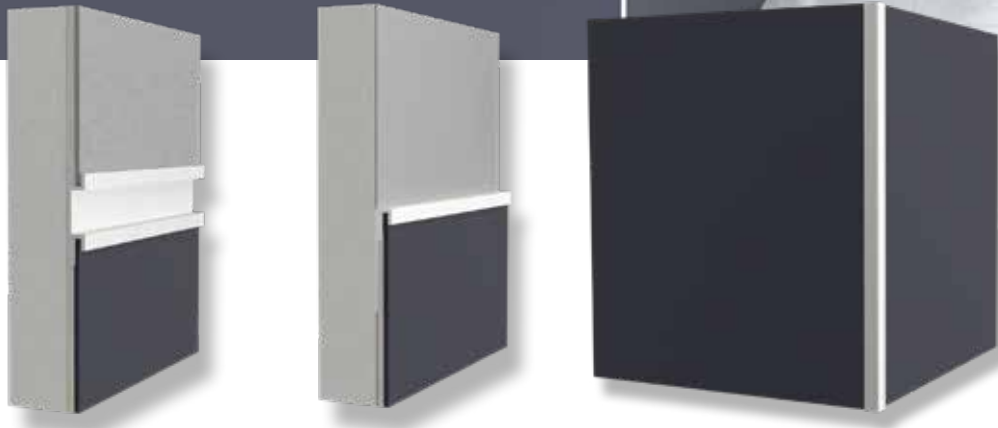




## UPGRADE YOUR WALLCOVERINGS WITH EAGLE ARCHITECTURAL TRIMS



Wallcoverings are becoming increasingly popular as technologies like digital printing have revolutionized their design, allowing for intricate, customizable creations and more diverse options like murals and personalized wall art. Textured wallcoverings including silk, linen, and wood panels add depth and dimension to indoor spaces. Eagle Aluminum wallcovering trims are designed for swift and straightforward installation, ensuring clean, sharp lines that protect the edges of material and elevate the overall finish.

Engineered to accommodate wallcovering materials up to 0.0625" thick, these trims are conveniently available in 10-foot lengths with Clear Satin Anodized or Mill Finish options, offering both durable wall protection and enduring aesthetic appeal. Their precise profiles create impactful reveals and crisp, defined corners, adding a layer of architectural sophistication to any commercial interior.

### GET A QUOTE

Contact an Eagle Sales Representative Today at **1-800-888-2044!**

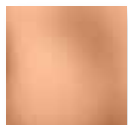
### ANODIZED FINISHES



Clear Satin  
AB1010



Champagne  
AA1020



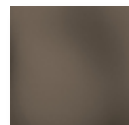
Rose Gold  
AA1090



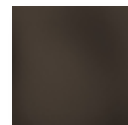
Golden Bronze  
AA1030



Light Bronze  
AA1040



Medium Bronze  
AA1050



Dark Bronze  
AA1060

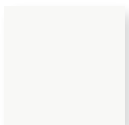


Deep Bronze  
AA1070

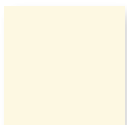


Black  
AA1080

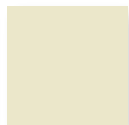
### POWDER COAT FINISHES



White  
PM5210



Cream  
PM5220



Almond  
PM5230



Khaki  
PM5240



Silver Gray  
PM5250



Light Gray  
PM5260



Dark Gray  
PM5270



Medium Bronze  
PM5050



Dark Bronze  
PM5060



Black  
PM5080

### READY TO SHIP

- 10' Lengths (120 Inches)
- Clear Satin Anodized Finish (EA)
- Mill Finish (MF)

### APPLICATION

- Designed for Material up to .0625" Thick

### COMPOSITION

- 6063-T5 Extruded Aluminum

### FINISH OPTIONS

- Clear Satin Anodized (EA)
- Mill Finish (MF)
- Anodized Finishes
- Powder Coat Finishes

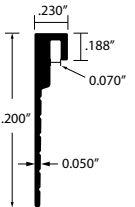
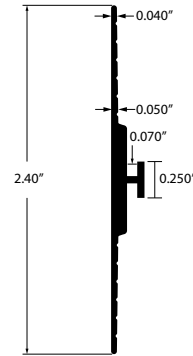
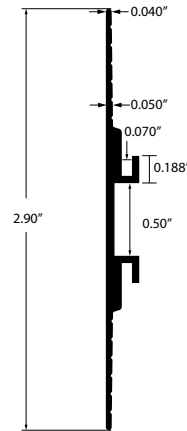
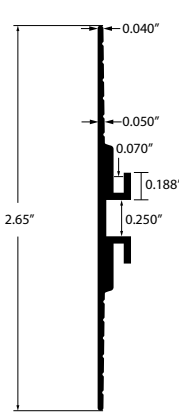
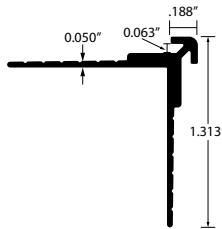
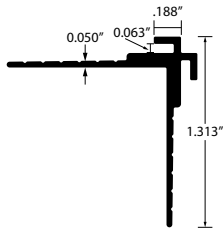


## EAGLE ARCHITECTURAL TRIMS WALLCOVERING PROFILES



### CORNERS, REVEALS, DIVIDERS & ENDCAPS

Designed for material up to .0625" thick



#### EWC-FOSC188

*3/16" Flanged Outside Corner Trim*  
EA, MF

#### EWC-AOSC188

*3/16" Arrow Outside Corner Trim*  
EA, MF

#### EWC-R250

*1/4" Reveal Trim*  
EA, MF

#### EWC-R500

*1/2" Reveal Trim*  
EA, MF

#### EWC-D250

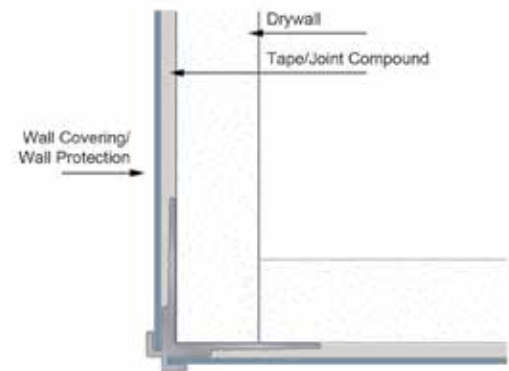
*1/4" Divider Trim*  
EA, MF

#### EWC-J188

*3/16" Edge Trim*  
EA, MF

**Aluminum Wallcovering Trims** create seamless transitions between materials, protecting and concealing the outer edge of wallcovering panels. Aluminum wallcovering trims are commonly used in hospitals, schools, community centers, and other locations where durability is key due to high traffic and potential for wear and tear. Aluminum architectural trims are known for their long-term durability and resistance to wear and tear, making them a reliable choice for projects in areas that are susceptible to physical damage.

Eagle Aluminum's wallcovering trims are made from 6063-T5 aluminum, an ideal material for aluminum trim extrusions due to its smooth surface and ideal structure for anodized finishing.



Example Installation: EWC-FOSC188, Outside Corner Trim